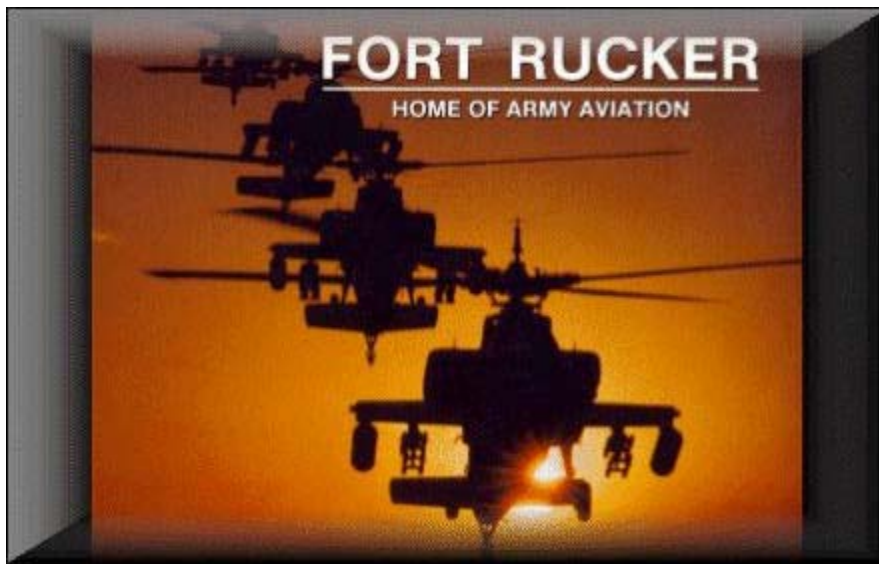


FORT RUCKER AVIATION CENTER

EVACUEE GUIDE



EVACUATION PROCESSING CENTER
(Physical Fitness Center)

BUILDING 4605
ANDREWS AVENUE
FORT RUCKER, ALABAMA 36362-5000

FORT RUCKER AVIATION CENTER FORT RUCKER, ALABAMA

EVACUEE PROCESSING CENTER
BUILDING 4605

PHYSICAL FITNESS CENTER

On behalf of the Commanding General of the Fort Rucker Aviation Center, the Directorate of Community Family Activities welcomes you to the installation in your time of need. We hope that you will find a safe and secure place to temporarily stay while the Severe Weather System is passing through our area of the country.

The Physical Fitness Center, Building 4605, is the designated "EVACUEE PROCESSING CENTER" for personnel and families who will vacate Tyndall Air Force Base, FL. Other military installation personnel, located in the Florida coastal area, are invited and welcome to utilize the facilities for shelter.

The PFC is converted to meet your needs and to provide information concerning the issues that surround the Severe Weather System and the Florida coastal region.

The Evacuee Processing Center is equipped to support the evacuees from the coastal area of Florida. The Air Force installations will utilize Fort Rucker Aviation Center as an area of retreat and safety from impending disaster. The Evacuee Processing Center will be set up at Building 4605, Physical Fitness Center. The center is located on Andrew Avenue. Within the facility, evacuees will be processed in for accountability and for placement into designated shelters. All evacuees are reminded that they should bring with them a variety of items. A checklist of items which are recommended are included in this packet. Additionally, you will find a diagram of the Evacuee Processing Center, Building 4605, and the installation map for directions to the designated building within this packet.

Evacuees may drive recreational vehicles (RV) or tow campers to Ft. Rucker. However, you will not be allowed to stay/sleep in them. They will be parked in a designated area for RVs. **NO FIREARMS (except those hand carried by SFS personnel), ANIMALS, OR ALCOHOLIC BEVERAGES ARE ALLOWED TO BE BROUGHT ON FT RUCKER DURING HURRICANE EVACUATIONS.** A list of kennels and veterinarians in the local areas is included in this packet.

Evacuees will be able to use pay telephones for long distance calls. These telephones will allow evacuees to use telephone credit cards by dialing 99-800- then the credit card telephone number.

The Evacuee Processing Center will be set up into centers of support. The following is an overview of services and support that will be offered:

INFORMATION CENTER

The evacuee will enter the front entrance of the Evacuee Processing Center and will be greeted by American Red Cross Volunteers, Air Force and Army personnel. At the Information Center, information is dispensed and clear directions are provided to assist evacuees. The Information Center will have the current information from the Emergency Operation Center of Fort Rucker, concerning evacuees who have processed in, and directions for processing in all evacuees. The Information Center staff will welcome the evacuee and direct him or her to the AG-Processing Center for shelter/housing, restrooms, and/or the American Red Cross Refreshment Center.

IN/OUT PROCESSING CENTER--SHELTER ASSIGNMENTS

This facility will be utilized by the Fort Rucker Aviation Center AG office and Air Force personnel. The evacuees will have to be processed into this center to be placed into designated shelters. The evacuee will have to provide some basic information to include name, SSN, rank, organization, home base assignment, duty AFSC/MOS, job title, total # of family members, home address and telephone number. The evacuee will have to indicate mode of travel to Fort Rucker Aviation Center. The evacuee will need to provide any and all special needs while staying at Fort Rucker. After this is completed, the AG team will assign a shelter to meet the needs of the evacuees. The evacuees will be directed to or escorted to the shelter.

AMERICAN RED CROSS SERVICE CENTER

The American Red Cross will be operated by paid and by volunteer staff. They will provide a variety of services, i.e., processing evacuees, shelter operations, case management, and mass care feeding. The Red Cross Service Center will be equipped with a first aid kit, towels for bathing purposes, comfort kit, coffee pot, microwave, water, cooler/ice, and a variety of recreational games, such as checkers, chess, cards and video tapes for family viewing. The Red Cross staff will have access to the laundry room and the refrigerator. Emergency casework will be provided on an as needed basis. Red Cross staff will administer comfort kits to evacuees in need. Mass care volunteers will be in charge of the service center and food items. An information board for weather and other updates will be hung in the recreational area.

COMMUNITY LIVING CENTER

This center will be the only designated living center for the evacuees who are assigned to the Evacuee Processing Center. All evacuees assigned to the facility will be provided a cot or sleeping bag. Also, sheets, pillows, pillowcases and blankets will be provided for evacuees. This center allows more than 300 personnel/family members to sleep/rest comfortably while the severe weather system is passing through our area of the country.

EVACUEE RECREATION CENTER

This center is the designated area for recreational activities. A television, equipped with a VCR unit, will be available for viewing pleasure. Also, children are encouraged to checkout table games and refreshments from the American Red Cross to relieve stress and combat boredom.

ARMY/AIR FORCE COMMAND CENTER

This facility will be used by personnel from the Air Force Command of Tyndall Air Force Base and Fort Rucker Aviation Center support personnel. This facility will facilitate a variety of functions to include but not limited to, coordination of meals, setup of facilities, van transportation, security, placement for evacuees into shelters and messages/announcements for the benefit of all evacuees who have processed in the Evacuee Processing Center.

CHAPLAIN COUNSELING CENTER

This facility will allow a quiet space for Air Force and Army Chaplains to counsel and console evacuees. Evacuees will be offered the support of counseling, comforting and hopefully a relief of stress during a time of uncertainty.

FIRST AID STATION

Treatment and assessment of basic injuries to evacuees will be provided in this area. If severe injuries occur, the evacuees will be escorted to the Army Lyster Hospital for treatment.

RADIO STATION GUIDE: (Ft Rucker Area)

95.5	WTBY-FM
99.7	WOOF-FM
100.5	US100
102.5	WESP-FM
106.5	WKMX-FM

SEVERE WEATHER WARNING

ALL EVACUEES MUST REMAIN ALERT ONCE THEY ARRIVE AT FORT RUCKER, AL. SAFETY IS EVERYONE'S RESPONSIBILITY. IMMEDIATE ACTION CAN SAVE YOUR LIFE.

FORT RUCKER'S SEVERE WEATHER WARNING SYSTEM IS:

*** Three five minute steady tones on the post siren system ***

- Everyone takes immediate shelter.
- Listen to public address system for additional information.

FORT RUCKER'S ALL CLEAR SIGNAL IS:

*** A rapid rising and falling sound similar to emergency vehicles ***

- Resume normal operations.

****SEVERE WEATHER WARNING SAFETY TIPS FOR SHELTERS****

- No firearms, animals or alcoholic beverages allowed in shelters.
- Do not use any type of camp stove inside the shelters. It produces carbon monoxide, which is a deadly gas.
- Stay away from windows, doors and outside walls. Do not open any windows or doors. Protect your head.
- If shelter has a basement, go to the basement and seek shelter under sturdy furniture or congregate in the center of the basement.
- If shelter is an office-type building, stand in an interior hallway on the lowest floor.
- In general, go to the interior part of the lowest level, closets, bathrooms or interior halls. Put as many walls between you and the outside as possible.
- In high-rise buildings, go to an interior small room or hallway.
- If you can not make it to a shelter, lie flat in the nearest ditch, ravine, culvert with your hands shielding your head. Be alert for rapidly rising waters in the ditch.
- Be careful of fallen power lines. Do not attempt to drive vehicles when power lines are down.

RELIGIOUS ACTIVITIES

(Ft Rucker Local Community)

The Fort Rucker Aviation Center Chaplain, the Ministry teams and staff volunteers extend a cordial invitation to every member of the Fort Rucker community to share spiritual benefits and activities. While you are here at Ft. Rucker, take advantage of the many spiritual growth opportunities available.

There are two chapels or houses of worship, a Jewish synagogue, a Mormon Temple, and a Moslem mosque on Ft. Rucker. There are also some predominantly ethnic churches (Hispanic, Catholic and Protestant) in the local community. Ft. Rucker and the outlying communities offer many religious activities, and all of these churches offer youth and teen programs, counseling and other religious ministrations, as well as a variety of social service activities, which provide volunteer opportunities for their members.

For more information and detailed schedule of religious activities and programs at Fort Rucker, you may contact us. You may also contact the various churches in the community through the local telephone directory.

Name : U.S. Army Aviation Center Chaplains

Address : Building 8945, 7th Avenue

City : Fort Rucker

State : AL

Zip : 36362

Phone : (334) 255-2989

Web Address : <http://www-rucker.army.mil/pao/ChapWeb/index.html>

IMPORTANT PHONE NUMBERS

Contingency Phone Number: (877) 529-5540 - Use the contingency phone number to keep informed of a situation's current status.

Duty Information Number: (800) 435-9941 - Use this toll-free number to contact Tyndall for return-to-duty information and status of the base.

Air Force Personnel Center: (800) 435-9941 - A military member can call this number to report their location during the evacuation and receive further instructions.

TRICARE Number: (800) 444-5445 - Call this number for the nearest TRICARE facility.

Evacuation Travel Entitlements

As hurricane season approaches, it's important to know how Team Tyndall members and their families will be affected in the event of an evacuation.

The 325th Fighter Wing commander can order an evacuation either verbally or in writing. The type of evacuation order given will determine who will receive travel entitlements. For instance, if the commander orders that only Tyndall residents have to evacuate, only those individuals actually living on base will be reimbursed for expenses incurred during an evacuation. The wing commander also has the authority to determine whether you can evacuate to a safe haven of your choice or to a specific location, such as Ft Rucker, AL.

If an evacuation has been ordered, members affected will receive travel entitlements. Entitlements will be determined based on the wing commander's evacuation order. For privately owned vehicle travel, personnel affected will receive 32.5 cents per mile if they own the vehicle, to pay all the expenses of the vehicle. A member without dependents can only be reimbursed for one vehicle. Individuals with dependents who also evacuate may be reimbursed for two vehicles, if used. Any tolls paid during the evacuation travel are reimbursable expenses.

Individuals affected by a command-ordered evacuation will be required to submit lodging receipts, regardless of the amount. Members staying with family or friends will not be reimbursed for any payments made to them. Per Diem rates will vary depending on the location, but the minimum for commercial lodging is currently \$50 per day. Individuals will only be reimbursed for the per diem rate of the location that they are authorized to evacuate to.

Receipts for meals will not be required. Members staying at an off-base location will be reimbursed for meals at a flat rate depending on the location. Currently the minimum commercial rate is \$30 per day and the maximum is \$46 per day. If lodged on a military installation, military members will be reimbursed based on availability of government dining facilities.

Although the government VISA card can be used during an evacuation, it is important to note that you are only authorized to use it for reimbursable travel entitlements, such as stated above. Automatic teller machine fees associated with the government credit card are reimbursable. However, reimbursement of ATM fees is limited by the entitled withdrawal amount. For example, if a member is entitled to withdraw \$500, any fees incurred by withdrawing above that amount will be paid by the cardholder.

Members evacuating are encouraged to keep an itinerary stating dates of travel. This will make filing a settlement voucher much easier. More information about military travel regulations can be found on the Internet at: www.dtic.mil/perdiem. All of the above information can be found in the Joint Federal Travel Regulation Volume I and Joint Travel Regulations Volume II.

EVACUATION CHECKLIST

When an evacuation is advised, you should bring the following items:

- Road map to the evacuation area
- Changes of clothing
- Swim wear
- Important papers
- Toilet and personal articles
- Baby articles
- Medications
- First-aid kit
- Fire extinguishers
- Candles
- Matches
- Dog tags and next-of-kin information
- Sleeping bags, blankets and pillows in waterproof casings
- Special diet foods
- Portable radio and spare batteries
- Flashlight with spare batteries
- Canned food
- Portable cooler
- Water
- Snacks
- Purse
- Wallet
- Money
- Rope
- Knife
- Tools
- Plastic bags and ties
- Deck of cards
- Manual can opener
- Cooking and eating utensils
- Portable camp stove
- Two weeks worth of prescription medicine

FORT RUCKER LOCAL KENNELS AND VETERINARIANS

<u>LOCAL KENNELS</u>	<u>PHONE NUMBER</u>
Petite Poodle Salon	793-9772
Rainbow Kennels	793-3264
S & S Kennels	794-9248
Labrador Creek Kennels	684-9552
Furry Friends Grooming	898-7823
Kennel Southeast Club Alabama	692-3123

<u>LOCAL VETERINARIANS</u>	<u>PHONE NUMBER</u>
Arnold Veterinary Hospital	585-2259
Searcy R W, Dr	585-3515
Jones Animal Clinic	735-2315
Cottonwood Animal Clinic	691-3693
Bain Animal Hospital	671-1990
Care Animal Center	794-6333
Martin Clark Animal Hospital	794-6624
Enterprise Animal Hospital	347-0086
Quisenberry Veterinary Hospital	393-4889
Westgate Veterinary Hospital	347-3475
Walden Pond Animal Hospital	693-5545

Severe Weather Phenomena



SEVERE WEATHER



Severe weather includes tornadoes, thunderstorms, high winds, hail, heavy rains, freezing temperatures/precipitation, and accumulation of snow.

Only the Air Force Weather Squadron at Cairns Field can issue an official weather watch or warning for Fort Rucker. These watches and warnings are disseminated throughout the post by the Post Staff Duty Officer or the Emergency

Operations Center. The National Weather Service issues watches and warnings to the surrounding communities through TV, radio, civil defense, and police channels. These watches and warnings cover a large area and are usually general in nature. Watches and warnings issued for Fort Rucker cover a 15-nautical mile circle, with Cairns Field at the center.

The post Emergency Warning System has several parts and is described in the Installation Weather Plan. The sirens are the most important part of this system. When you hear a steady tone from the sirens during severe weather it means one thing—a tornado is approaching Fort Rucker. Take cover immediately and turn on your TV to Cable Channel 5 or 6 and listen for the latest weather information provided by the Weather Squadron. Remember, severe weather plus sirens means you are in danger and should take cover immediately. When the sirens begin sounding a wavering up-down tone, it is the all clear signal. Although the all clear may be sounded, stay alert as tornadic activity can still be spawned from the weather system.

Anyone seeing a tornado, or suspected tornado, should immediately call the Duty Forecaster at Cairns Weather, 255-8385 or 255-8397.

FLOODING

When 6-10 inches of rain occur in this area, certain areas on post and the surrounding area may flood. Flood control operations on post will be in accordance with Base Disaster Plan. Assistance off post will be in accordance with the Military Assistance to Civil Authorities Plan.



TORNADO SAFETY TIPS

- Stay away from windows, doors, and outside walls! Protect your head.
- Listen to radio, television, or NOAA Weather Radio for latest Weather Service Bulletins.
- In office buildings, stand in an interior hallway on the lowest floor.
- In homes, go to the basement and seek shelter under sturdy furniture or take cover in the center part of the house on the lowest floor.
- In mobile homes or vehicles, leave them and go to a reinforced structure or lie flat in a ditch or depression.
- In schools, move to shelter areas or to an interior hallway on the lowest floor.
- In open country, move away from the tornado's path at a right angle or lie flat in the nearest depression with your hands shielding your head.

TORNADOES ARE ONLY ONE OF THUNDERSTORM KILLERS.

- Lightning is a major killer. Stay indoors and away from electrical appliances. If traveling, stay in your automobile as it offers excellent protection. If your hair stands on end or your skin tingles, lightning may be about to strike you, drop to the ground immediately.



- Thunderstorm rains cause flash floods. Be careful where you take shelter.
- Winds. Very strong straight-line winds can cause great damage.
- Large hail. A rare killer but very damaging. Movement during severe weather is discouraged. If you must seek shelter, move carefully.



EMERGENCY OPERATIONS CENTER - EXT 9776

Official Telephone Directory



**UNITED STATES ARMY AVIATION
CENTER
FORT RUCKER, ALABAMA
36362-5000**

EMERGENCY NUMBERS

*Ambulance	.5-7800	MAST	.5-8543
*Fire (255 Numbers Only)	.911	American Red Cross	1-877-272-7337
*Fire (598 Numbers Only)	.911	Emergency Operations Center	.5-9776
Military Police	.5-3215		
*Military Police	.5-2222		
Military Police	.5-2354		
*Military Police	.5-2357		
Crash Reporting	.5-8358		

*Telephones with listings designated by an asterisk are recorded for verification of emergency information.

DSN 558-XXXX COMMERCIAL 255-XXXX AREA CODE 334

SERVICE NUMBERS

UTILITIES	.5-9041
ADPE HELP DESK	.5-9037
TELEPHONE	
Information (On Post)	.113
Information (Off Post)	(334)255-1030
Repair	.5-2020
Long Distance Information	.99-1-(area code)555-1212
Long Distance 800 Information	.99-800-555-1212
Work Order Management	.5-2246
TV CABLE SYSTEM REPAIR	
ETV/Weathervision	.5-2020
BOQ	.99-598-6333
Commercial Cable	.99-598-6333
TIME/WEATHER	.102
WESTERN UNION	.99-503-9044 (ext 233)
VENDING MACHINE	.99-503-9044 (ext 245)
DEFENSE DATA NETWORK (DDN)	.5-3809
POST LOCATOR	.5-9709

DUTY OFFICERS

USAAVNC	
Field Officer of the Day	.5-3100
Staff Duty Officer	.5-3400
Staff Duty NCO	.5-9405
USARI ROTARY-WING AVN RSCH UNIT	.5-2834
USA AVN TECH TEST CENTER	.5-8059
USA AEROMED CENTER	.5-7700
USA DENTAL ACTIVITY	.5-7151
USA AEROMED RSCH LAB	.5-6920
USA SAFETY CENTER	.5-2660
DIR OF INFO MANAGEMENT	.5-2174
RESIDENT OFC REG USACIDC	.5-3509
FLD OFC 3D REG USACIDC	.5-3108
COMMISSARY	.5-2212
23D FLYING TRAINING FLIGHT	.5-1207

DO NOT PROCESS, STORE, OR TRANSMIT CLASSIFIED INFORMATION ON NONSECURE TELECOMMUNICATIONS SYSTEMS. OFFICIAL DOD TELECOMMUNICATIONS SYSTEMS, INCLUDING TELEPHONES, FACSIMILE MACHINES, COMPUTER NETWORKS, AND MODEMS, ARE SUBJECT TO MONITORING FOR TELECOMMUNICATIONS SECURITY PURPOSES AT ALL TIMES. USE OF OFFICIAL DOD TELECOMMUNICATIONS SYSTEMS CONSTITUTES CONSENT TO INFORMATION SYSTEMS SECURITY MONITORING.

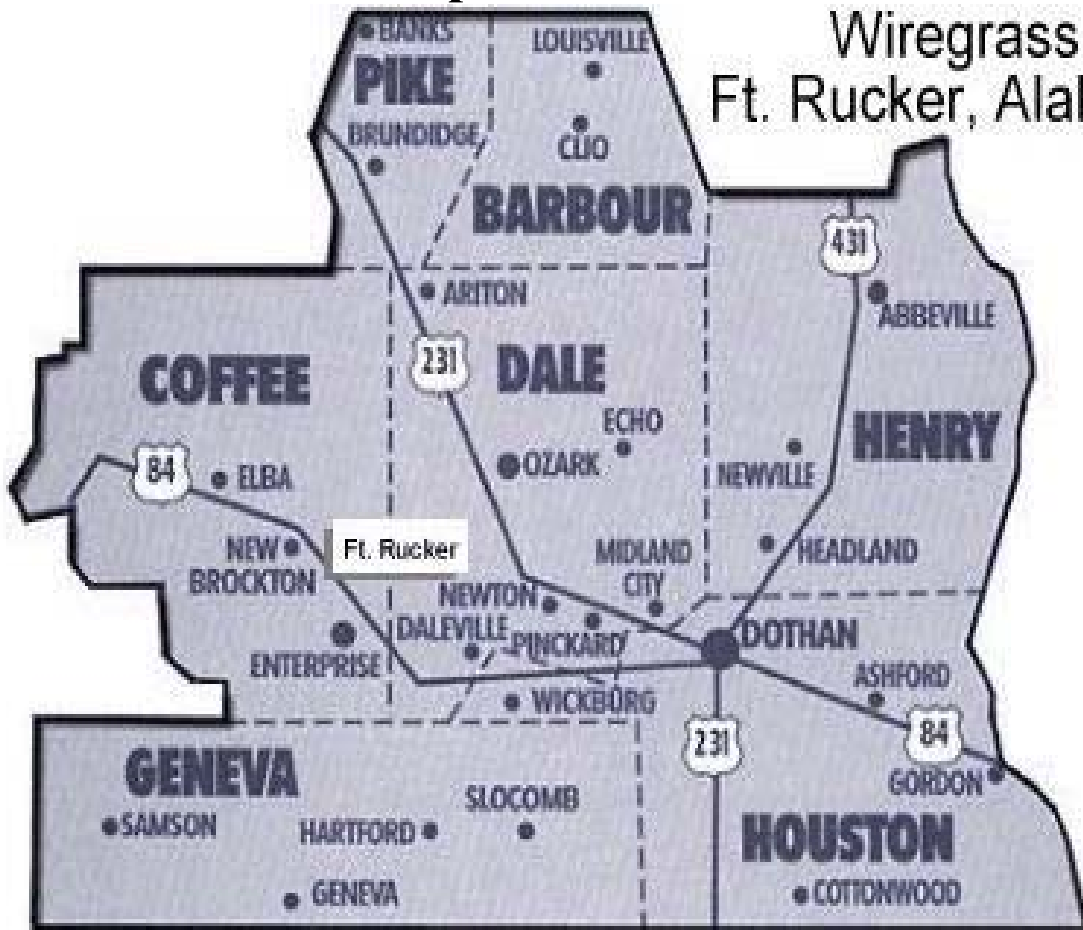
This publication is the property of the United States Government. Distribution is limited to activities and individuals located on or adjacent to the installation who receive service from the post telephone system and to other users on an individual request basis.

This Telephone Directory is an authorized publication of Fort Rucker. It is published annually as a part of the Fort Rucker Information Guide in the interest of members of the U.S. military services.

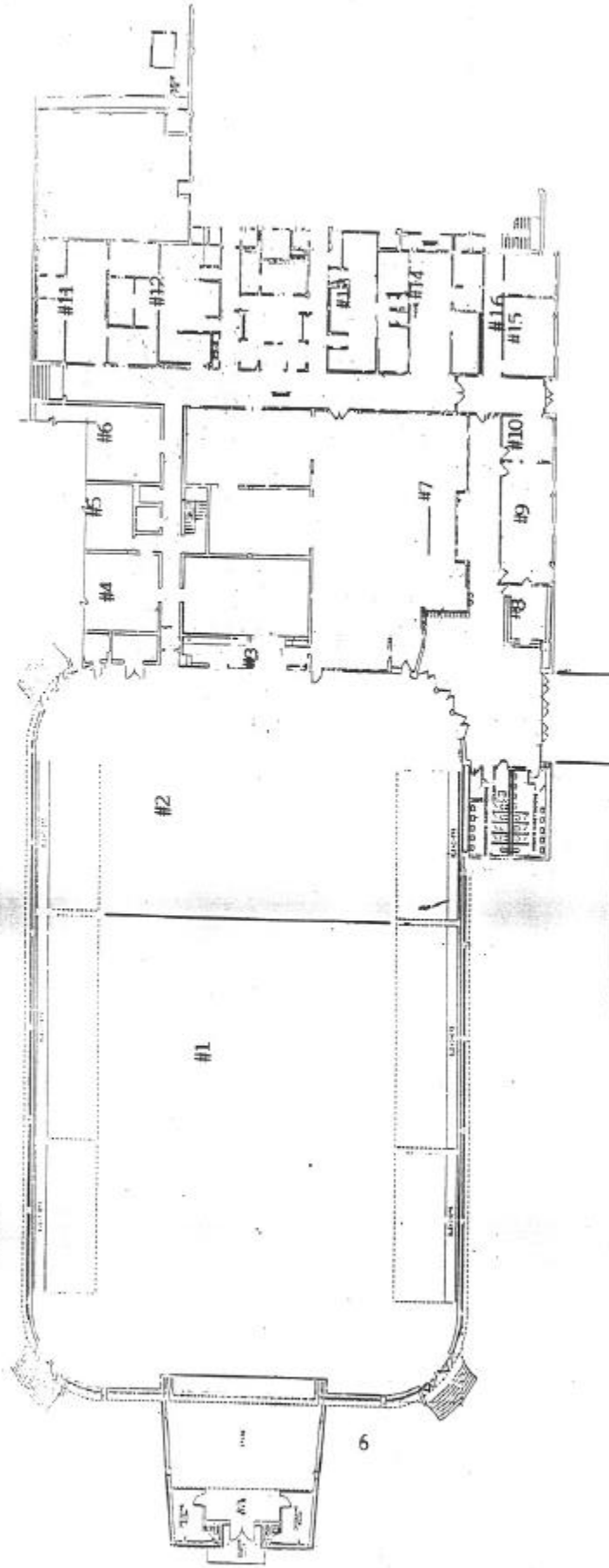
This directory is compiled from listings furnished by organizations and individuals. Corrections, additions, and deletions should be submitted to Directorate of Information Management (DOIM), Administrative Services Branch, building 4508, 5-1363.

Fort Rucker Area Map

Wiregrass Area
Ft. Rucker, Alabama



EVACUEE PROCESSING CENTER



BUILDING 4605 PHYSICAL FITNESS CENTER

1. COMMUNITY LIVING CENTER/COTS - SLEEPING BAGS
2. EVACUEE RECREATION CENTER/LEISURE ACTIVITIES
3. AMERICAN RED CROSS SERVICE CENTER
4. RACQUETBALL COURT
5. SQUASH COURT
6. RACQUETBALL COURT
7. IN/OUT PROCESSING CENTER--SHELTER ASSIGNMENTS
8. INFORMATION CENTER
9. ARMY/AIR FORCE COMMAND CENTER
10. CHAPLAIN COUNSELING CENTER
11. MEN'S LOCKER ROOM
12. WOMEN'S LOCKER ROOM
13. WOMEN'S LOCKER ROOM
14. WOMEN'S LOCKER ROOM
15. FIRST AID STATION
16. EVACUEE TELEPHONE SERVICE

What to do during, after a hurricane

With winds that can easily exceed 100 mph, hurricanes are among nature's most violent storms. While the best advice is to be out of the area where the storm is predicted to make landfall, where should you go? What about if you're caught by the storm and must "ride it out," do you know what to do? Here are a few of the most commonly asked questions.

Q: Where do I go if Tyndall has to evacuate?

A: Tyndall's primary safe haven for members is Fort Rucker, Ala. Fort Rucker is about an hour and one-half drive from Tyndall under normal driving conditions, however dense traffic could increase driving time up to five or more hours. Bus transportation will also be provided to the Fort Rucker area.

Q: Where will I stay?

A: Evacuees will either stay in Fort Rucker's base gym or billeting, if available.

What if I have a pet?

Pets are not allowed inside any shelter facilities at Ft. Rucker; this includes the gym and billeting. In addition, the American Red Cross does not allow pets at their facilities. Members owning pets are advised to plan ahead and find a kennel to house their pets or a motel that allows animals in rooms. The disaster preparedness flight, located in Building 909, has a listing of kennels in the Ft. Rucker area.

Q: Do I have to go to Fort Rucker?

A: No, members may evacuate to other locations if they choose, but it must be approved by their commander. Additionally, evacuation allowances will be based on the safe haven locations. Should a member be unable to make it to Fort Rucker and have to go to another area, they may report their whereabouts by notifying the Air Force Personnel Center, at (800) 435-9941, or Tyndall, at (800) 896-8806. However, determination of financial reimbursement will be based upon evacuation to Ft. Rucker.

Q: Do I need to bring anything with me to Fort Rucker?

A: Yes. If you have to stay at the base gym, cots will be provided for you, but members should bring their own blankets, towels and personal hygiene products.

Q: Will the base exchange facility be open when I arrive?

A: Upon arrival at Ft. Rucker, personnel will be informed of the base exchange and dining facility operating hours.

Q: What do I do during a hurricane?

- Stay away from windows and glassed areas.
- Listen for continuing weather bulletins and reports.
- Use the telephone for emergencies only.
- Follow official instructions.
- Be aware of the eye of the hurricane. A lull in winds doesn't mean the storm is over. Remain indoors unless emergency repairs are necessary. Exercise caution outside. Winds may resume suddenly, in the opposite direction and with greater force.
- Be aware of rising water.

• If electric service is interrupted, note the time, then turn off the appliances, especially air conditioners. Do not disconnect refrigerators or freezers. In fact, set controls to their coldest settings and keep doors closed to preserve food as long as possible.

• Keep away from fallen wires, and if you see any, report their location.

• Presume all water is contaminated. Boil or use purification tablets until the water is declared safe.

Q: What do I do after the hurricane?

- Listen for official word that the danger has passed.
- Watch for animals, like snakes and rats, that may have relocated in your home.
- Inspect your home for damage.
- Check for gas leaks before lighting flames.
- Be alert for downed power lines and flooded areas.
- Stay out of affected areas; sightseeing hampers recovery and cleanup efforts.

Categories

Hurricane conditions should not be confused with hurricane categories. Hurricanes are studied by the National Weather Service. Along with a name, they give it a category based on the Saffir-Simpson scale of 1 to 5. These categories give weather watchers an idea of how strong the hurricane winds will be and how high the storm surge will reach. They are:

Category 1 - Winds 74 to 95 mph;
storm surge 4 to 5 feet

Category 2 - Winds 96 to 110
mph; storm surge 6 to 8 feet

Category 3 - Winds 111 to 130
mph; storm surge 9 to 12 feet

Category 4 - Winds 131 to 150
mph; storm surge 13 to 18 feet

Category 5 - Winds more than 150
mph; storm surge greater than 18 feet.